

LOCKBOX PROCESSING

eBANKING SUITE FOR MICROSOFT DYNAMICS AX

If you are using a lockbox service to improve your cash flow by collecting checks from your customers, *LockBox Processing* will help you by processing the electronic file that you receive from your bank. Where included remittance information is complete, cash receipts will be automatically settled to invoices. For those cash receipts where the matching document is questionable, use the *Lock-Box Workbench* to match the cash receipt to the appropriate invoice. In any case, since you don't have to enter each of the transactions individually, you will save time and money through better efficiency, accuracy, and security. Don't use a lockbox agent? No problem! Simply key your cash receipts into an Excel spreadsheet and act as your own lockbox agent!

Benefit

Accelerate your incoming cash flow by importing your bank's proprietary lockbox file, matching the payments up against your customer's invoices and then processing the payment journal. In addition, *LockBox Processing* can eliminate the time consuming process of receiving the checks, opening, sorting and manually entering the payment and settlement information. What had taken hours, now takes minutes.

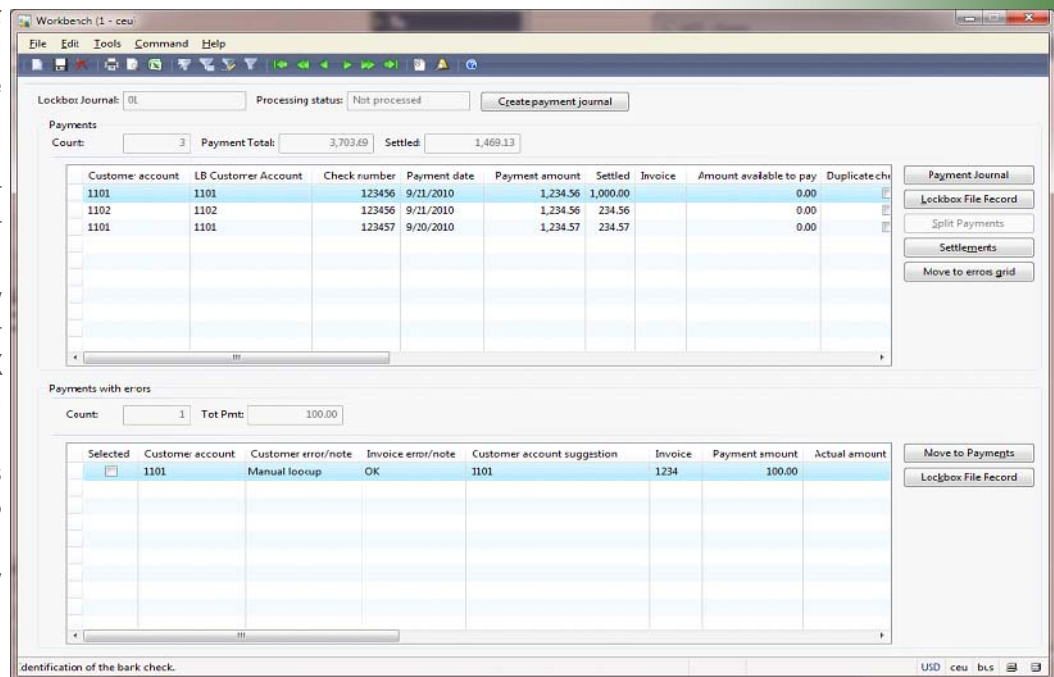
Payment Application Workbench

The most difficult aspect of processing lockbox transactions is accurately interpreting the supplied data file and identifying the customer and invoices to which the payments apply. With *LockBox Processing*, this process is facilitated by using *Lockbox Workbench*, where you are presented with a visual environment to view the "system generated" payments and settlement information, along with those that require more manual attention. Once all payments are accurately accounted for, you can then submit them to a Microsoft Dynamics AX payment journal, optionally posting it or leaving it as an unposted journal. The *Lockbox Workbench* is built with flexibility in mind, so changes can be easily made. Historical lockbox files are easily viewed.

Designed For the Microsoft Dynamics AX™ Financial Series

Other Modules in the eBanking Suite

- eBankRec - Advanced
- Positive Pay
- Lockbox Processing



Use the Lockbox Workbench to review and edit payment and settlement information before submitting as a Payment journal.

Seamless A/R Integration

LockBox Processing facilitates the creation of a standard Microsoft Dynamics AX payment journal complete with settlements. In this sense, it's a front-end tool that seamlessly integrates with your existing Accounts Receivable processing.

Multiple Lockbox Processors

Whether you have a single lockbox processor or receive multiple lockbox transmissions for multiple Bank accounts, *LockBox Processing* can handle the job. Multiple bank accounts, file formats, or lockbox processing options are all situations easily identified in one-time setup. Each Bank account can be identified with a different lockbox format and/or different processing options.

Bank File Formats

Whether your bank is standardized on BAI2 or has its own custom lockbox format, it is important that a lockbox product support your bank's processing needs. Sandler-Kahne's *LockBox Processing* has a very user-friendly custom format mapping utility that allows you to take a sample of your bank's lockbox file and visually see the file layout and map the contents to its respective customer / payment fields. Fixed field, comma delimited, tab delimited and BAI2 formats are supported. Multiple formats are easily maintained for use by different Bank accounts.

BUSINESS ISSUES	HOW THIS FLEXIBLE PRODUCT CAN HELP
Other systems provide a lockbox report, to be keyed in. What more does <i>Lockbox Processing</i> offer?	Lockbox Processing is seamlessly integrated with Microsoft Dynamics AX Because <i>Lockbox Processing</i> is written with the same tools as Microsoft Dynamics AX, it looks, feels and works like an extension to the existing payment journal process. Once the lockbox files are imported and parsed into payment and settlement information, the <i>LockBox Workbench</i> presents this information to the user for easy review and provides an opportunity to edit as necessary. When review is complete, <i>Lockbox Processing</i> creates a Microsoft Dynamics AX Payment journal and no additional data entry is required.
We use three different banks ... each with different Lockbox formats	Use Bank Account Setup Features Bank accounts can each have their own lockbox format – any number of banks and formats are supported. When retrieving lockbox files, the different file format and processing options are automatically used.
How do I know whether my lockbox file has been processed?	Lockbox journal status is maintained by the system Whether the lockbox file has been imported into the workbench, partially submitted or fully submitted into a payment journal, <i>Lockbox Processing</i> keeps. It is very easy to view the status of a file in any stage of progress. If some of the payments for a particular file are not fully researched, the other payments can be sent to a payment journal. When the remaining items are finalized, they can be processed in their own payment journal.

Lockbox Processing delivers these additional features:

- Automatically-generated settlement information
- Fixed field, comma/tab delimited, BAI2 formats
- Header/Trailer records stripped
- Optionally Auto-Post Payment journals
- Archiving
- Multiple Bank Accounts
- Virtual company support

**Available on these Microsoft Dynamics AX Versions:
AX 2009, 2012**

The eBanking Suite for Dynamics AX is a joint development project with Plumline Solutions, Inc.



**SANDLER • KAHNE
SOFTWARE**

11140 Rockville Pike, #299
North Bethesda, MD 20852

Voice: (301)963-7300 x117
Fax: (301)560-4984
Email: sales@sksoft.com
Web: www.sksoft.com

© Sandler-Kahne Software, Inc.
2000-2011 all rights reserved
All features/functions mentioned within this document are subject to change. This document is for information purposes only. Sandler Kahne Software makes no warranties, express or implied, in this document.
Revised 07/8/2011